

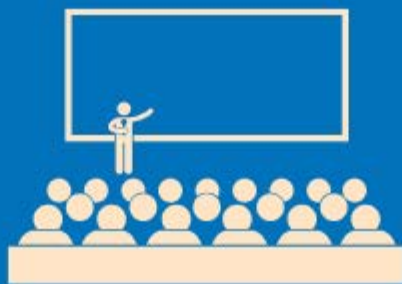


Hall Park
Academy

This week's assembly

SEND

Led by Miss Dickman





SEND

Hall Park Learner

- **H**ard-working
- **A**mbitious
- **L**earners 4511
- **L**eaders
- **P**articipants
- **A**mbassadors
- **R**esilient
- **K**ind



As Hall Park Learners, we should be kind.

British Values	Hall Park Value	At Hall Park, we believe...
Democracy	Democracy	everybody has a role to play and people should be able to voice their opinions about the issues that matter to them in a DEMOCRATIC way.
The rule of law	Responsibility	laws and rules are there to keep us safe. Everyone needs to respect them and take RESPONSIBILITY for their actions.
Individual liberty	Independence	in the importance of individuals developing the self-esteem, confidence and initiative necessary to think INDEPENDENTLY .
Tolerance of those of different faiths and beliefs	Value	everyone's beliefs, religious or otherwise, should be VALUED and respected unless they encourage hatred or harm towards others.
Equality	Equality	people should be treated EQUALLY regardless of their race, gender, sexuality, religion or background.

Which of the **British** and **Hall Park DRIVE Values** would **Kindness** come under?



What is SEND?

- Special Educational Needs and Disabilities (SEND) refers to the diverse range of learning difficulties, disabilities, and conditions that may impact a child's ability to learn and participate in school activities.
- We want an inclusive learning environment where *all* students can participate fully and benefit from the education.
- We work to remove any barriers that prevent students from not accessing and thriving in their education.



Misconceptions

- SEND Students Are Less Capable of Achieving Success
- All SEND Students Are the Same
- SEND Students Are Always Easily Identifiable
- SEND Students Need to Be 'Fixed



Cognition and Learning Difficulties

- * Specific Learning Difficulties (SPLD)
eg dyslexia/dyscalculia
- * Moderate Learning Difficulties (MLD)
- * Severe Learning Difficulties (SLD)
- * Profound & Multiple Learning Difficulties (PMLD)

Social, Emotional and/or Mental Needs

- * Depression
- * Attention Deficit Hyperactivity Disorder (ADHD)
- * Eating Disorders
- * Anxiety Disorders
- * Mental Health Issues
- * Social Disorders

Communication and Interaction Needs

- * Speech, Language and Communication Needs (SLCN)
- * Autistic Spectrum Disorder (ASD)

Sensory and/or Physical Needs

- * Visual Impairment (VI)
- * Hearing Impairment (HI)
- * Multi-Sensory Impairment (MSI)
- * Physical Disability (PD)



The Team

- SENDCo – Miss Dickman
- Assistant SENDCo -Mrs McCluskey
- Teaching Assistants - Mr Adams, Mrs Kirk and Mr Smith and Mr Thomas
- SSC – Mrs Scott, Mrs Speight and Mr Wright



Support Available

- Learning plans
- Workshops
- Tutor interventions
- In class support
- Mentoring
- Reader pens/laptops/overlays
- Break/lunch club
- Homework club



Exam Access Arrangements

- Reader/reader pen
- Small room
- Prompt
- Scribe
- Laptop
- Rest breaks
- Extra time



More Information

- Miss Dickman or Mrs McCluskey
- Mr Thompson
- Form tutor of Head of House

