



Hall Park
Academy

Year 6 transition guide 2023



 **REDHILL**
ACADEMY TRUST
Equality and Achievement



Welcome

FROM THE HEADTEACHER

It is our pleasure to welcome you as parents, and your sons and daughters into Year 7, for the academic year 2023-24.

At Hall Park Academy we have four principles that guide everything we do:

- High expectations of all students
- Valuing and celebrating academic achievement
- Outstanding teaching for all students
- Widening students' experience through a range of extra-curricular activities including sport and the performing arts.

We are very proud of our team of talented staff at the Academy who support, nurture and challenge the hardworking students who come here. There are many exciting things in store for the students, both in lessons and in the range of co-curricular activities on offer, which we would encourage them to embrace as much as they can.

Finally, we would like to thank you for choosing Hall Park Academy for the next stage of your child's education. We look forward to working with you to provide the best opportunities possible for your sons and daughters.



Mr Crossley
Headteacher

Welcome

FROM THE PASTORAL TEAM

Every student at the Academy is a member of one of four Houses: Astle, Collier, Erewash and Lawrence.



Vertical tutor groups of around twenty-five students are arranged within the House system. The tutor has primary responsibility for the support of students within their tutor group and liaises closely with the Heads of House to provide pastoral care and guidance for all students. Within tutor groups older students are seen as role models and encouraged to mentor our younger students, providing an additional informal means of support.

There are numerous inter-House activities that run throughout the year. These include sporting, charity and cultural events, performing arts and much more. Students quickly form an allegiance to their House and a sense of healthy competition pervades all House events.

Astle House



Mrs Paget
Head of House



Welcome to Astle House! Our colour is yellow. Our bright colour reflects our values: positive, optimistic and enthusiastic. It matches with our teamwork ethos of 'Anything is possible when we aim high'.

We are named after Jeff Astle. Born in Eastwood, Jeff was an international football player who played in the 1970 World Cup for England in Mexico. But perhaps his greatest ever achievement was in the 1967-68 season, two years before the World Cup. He scored the winning goal in the 1968 FA Cup final: West Bromwich Albion 1 v 0 Everton. This made him 1 of only 9 players to score a goal in every round of the competition in the same season.

Talking of football! We have an impressive skill set of aspiring footballers in our House. Aiming high and reaching Club level too.



Mr Dolman
SLT Link

Our amazing student leaders organise the Astle Christmas Cracker, our annual House charity extravaganza. As well as being a spectacular musical event, we raise much needed funds for our chosen mental health charity: Ronald McDonald House. We look forward to you joining our House and being a part of the Astle Team.

Collier House



Miss Lockwood
Head of House

Your Head of House, Miss Lockwood, and SLT link, Mr West, would like to welcome you to Collier House.

Collier House gets its name from the heritage of coal mining in the area and the men who used to mine the coal. Colliers Wood in Eastwood was itself formed on the site of the former Moorgreen Colliery.



We believe being inspired is the key to greatness! Teamwork and interaction are incredibly important to us, along with being honest, respectful, and of course happy. This leads us to our inter-House events as without teamwork and interaction we wouldn't be successful in these events. There are many Inter-House events that we want you to get involved in and Collier has always enjoyed strong representation at all events, with a great track record at winning many of them! Participation is important to us.



Mr West
SLT Link

We have high standards and expectations of our students and we encourage Collier students to show these high standards at all times as well as encouraging their peers to do the same. There are many opportunities to get involved in at Hall Park to represent Collier House and we hope you take advantage of these.

A warm welcome awaits you in Collier House, we cannot wait for you to join the team!

Erewash House



Mr Simpson
Head of House



Mr Thompson
SLT Link

Erewash House is led by Head of House Mr Simpson. We are extremely proud of our wonderful team of tutors and students who get involved in a diverse range of activities and are able to showcase a wide variety of interests and talents.

The River Erewash is a prominent local feature that separates Nottinghamshire and Derbyshire. We have a house mascot which is a cunning little fox.

As a House we are always keen to help and support local charities and for the last few years have raised money for the Broxtowe Homelessness Project. Each year we organise the Harvest Festival celebration and the eagerly anticipated "Erewash Easter Egg-stravaganza!"

We have high standards and expectations of our students and we encourage Erewash students to buy into our message of participation (in events both in and out of school), supporting each other and achieving.

Our students devised our House motto which is:

Everyone

Reads (a lot)

Everyone

Writes (a lot)

And then

Success

Happens!

#TheRedHouse!

Lawrence House



Miss Dickman
Head of House



Mrs Norridge
SLT Link

A very warm welcome to Lawrence House!

We are named after the famous writer, D H Lawrence, one of the most highly regarded and influential writers of the 20th century, who was born and lived here, in Eastwood.

The colour green symbolises growth and harmony, which represents us perfectly. In Lawrence House we want you to show teamwork and support for one another, whilst growing in character and striving to be the best that you can be.

There are a range of inter-House events from football to bake-offs, talent competitions to spelling bees. There is something for everyone, and in Lawrence we pride ourselves on participation. So many inter-House competitions are won by Lawrence due to the vast number of students wanting to be involved and contribute. Show up and take part is a key message we want all students in our House to promote.

In Lawrence we pride ourselves on positive attitudes and involvement. We are excited to meet you, listen to your ideas and welcome you properly into Lawrence House!

Inter-House activities



▲ Inter-House netball



▲ Inter-House baking



▲ Inter-House MFL



▲ Inter-House Christmas cards

Hall Park pledge system

We encourage students to gain a breadth of experiences both in and out of school. This includes accessing the wide range of extracurricular opportunities on offer and representing their House. In order to further develop this ethos and raise expectations around the importance of engagement from everyone, we have in place an exciting programme called 'pledges'.

Students are awarded pledges for their wider contribution to Academy life. The theme of our pledges are displayed throughout the Academy and staff dedicate time to focus on helping students identify opportunities to achieve their pledges and the importance of doing so. The pledges are detailed below.

1

To successfully participate in residential trips.

Students must ensure they represent the Academy in line with Academy ethos, values and code of conduct.

Examples: French/German/Belgium/ski trip.

2

To represent the Academy in sports.

Students must represent the Academy consistently in sports events or teams (inter-school).

Examples: football, athletics, netball, basketball.

3

To contribute to Academy performing arts events.

Students must contribute consistently towards performing arts events.

Examples: music, dance, drama, backstage crew.

4

To organise and actively participate in at least 6 different assemblies.

Students must participate in either a tutor, house or year assembly.

5

To organise and actively participate in at least 3 fundraising events.

Students must get involved in fundraising events in tutor time, House charities or whole school events. All fundraising events must be different.

Examples: House charity events, Children in Need, Sports Relief, Comic Relief, shoebox appeal.

- 6 To represent the Academy/House in at least 10 different events.**
Tutors to record in passport.
Example: inter-House sports, inter-house academic competitions poetry, it's a knockout.
- 7 To take part in community projects.**
Students must make a significant contributions to the local community.
Examples: sports leaders, Duke of Edinburgh, student voice, carol concert, primary school visit.
- 8 To participate in activities that support others within the Academy.**
Students must consistently support their peers in a range of ways.
Examples: mentoring, coaching, paired reading, inductions, options evening.
- 9 To attend cultural or sports events outside of school.**
Students must demonstrate a consistent commitment to a range of cultural or sporting events outside of school.
Examples: theatre trips, sports events. Evidence provided by student and discussed with tutor.
- 10 To read 3 novels per year and complete a book review for each.**
Students must read a minimum of 3 books throughout the school year and provide a review of each of the books.
Example: To Kill A Mockingbird – written review to tutor/verbal presentation to tutor group.

Students record pledges in their passport, which stays with them through Years 7 to 11.

Students in Year 11 will celebrate their pledge achievements by earning their 'passport to the prom'. This is earned through making progress with their pledges, outstanding attendance and punctuality, good academic progress and a positive behaviour profile.



Hall Park DRIVE values

Here at Hall Park Academy, we strongly believe that each of our DRIVE values should guide the way all members of the Academy conduct themselves. Through tutor time, PSHE and assemblies we promote and celebrate these values showing how they help us become better members of the school and wider community.

British Values	Hall Park Value	At Hall Park, we believe...
Democracy	Democracy	everybody has a role to play and people should be able to voice their opinions about the issues that matter to them in a DEMOCRATIC way.
The rule of law	Responsibility	laws and rules are there to keep us safe. Everyone needs to respect them and take RESPONSIBILITY for their actions.
Individual liberty	Independence	in the importance of individuals developing the self-esteem, confidence and initiative necessary to think INDEPENDENTLY .
Tolerance of those of different faiths and beliefs	Value	everyone's beliefs, religious or otherwise, should be VALUED and respected unless they encourage hatred or harm towards others.
Equality	Equality	people should be treated EQUALLY regardless of their race, gender, sexuality, religion or background.

Student Support Centre

Welcome to the Student Support Centre. We are here to offer you any additional support you may need to help you along on your Hall Park Academy journey. If things are getting too much and you need someone to talk to please come and speak to one of our friendly staff.



Mrs Hatherley
Inclusion Manager



Miss Hughes
Inclusion Officer



Miss Mason
Inclusion Officer

The Student Support Centre offers a range of 1:1 and group mentoring sessions and pastoral workshops to support students' wellbeing and enable them to recognise their own potential.



Learning Support team

A warm welcome from the Learning Support team. We appreciate starting a new school can be worrying time for students and parents. Our team are here to support you and ensure your learning needs are met whilst you are with us at Hall Park Academy.

If you would like to speak to someone at Hall Park Academy about your child's specific needs, please contact the following members of staff:

Mrs K More (Associate Assistant Headteacher – SENDCo):

moorek@hallparkacademy.org.uk

Mrs J McCluskey (Assistant SENDCo): mccluskeyj@hallparkacademy.org.uk

In addition to in-class support, we offer a quiet space for students during break and lunchtime. This provision allows students to eat their lunch in a quiet space, meet new friends and partake in a variety of activities.



Mrs Moore
SENDCo



Mrs McCluskey
Assistant SENDCo

Timings of the school day

Time	Activity
By 8.40am	Arrive at school
8.45am	Period 1
9.45am	Period 2
10.45am	Tutor time
11.05am	Break
11.20am	Period 3
12.20pm	Lunch
1.00pm	Move to lesson
1.05pm	Period 4
2.05pm	Period 5
3.05pm	End of school / co-curricular activities

Year 7 subjects

- Maths
- English
- Science
- Computing
- Physical Education
- Religious Studies
- French and/or German
- History
- Geography
- Design Technology
- Art
- Drama
- Music
- PSHE

Equipment list

- School bag – large enough for an A4 folder
- Pencil case
- Black or blue ink pens (biro or handwriting pen)
- Red pen – for responding to marking
- Pencil(s), eraser and sharpener
- Ruler
- Highlighter pens
- Calculator
- Maths geometry kit: protractor, compass and set square
- PE kit
- Reading book
- Equipment for practical lessons when needed, e.g. cooking
- Refillable water bottle (or similar) for drinking water



The Learning Resource Centre



The LRC is a bright welcoming space at the heart of the school that provides a reading, study and learning environment for students. It is open before and after school and at breaks and lunchtime.

There is a large collection of fiction and non-fiction books in the LRC. Students may borrow three books for up to three weeks at a time. Books may be renewed at the information desk for an additional three weeks if needed.

The LRC is well used during lesson times by our Accelerated Reader classes and reading progression and intervention programmes. Space is available for individual and quiet group work and there is access to computers to complete research and homework, plus a printer/photocopier.

Clubs

Homework—This is held after school in the LRC from 3.05 to 4.30pm, Monday to Thursday. Support with homework is available from our Librarian working there.

We also have several **Book Clubs** that run every year—shadowing national awards such as the Carnegie and Brilliant Book Award. If you're into board games you might like to join our **Chess** or **Scrabble** clubs too!



LRC opening times:

Monday to Thursday
8am to 4.00pm

Friday
8am to 3.05pm

D E A R

DROP EVERYTHING AND READ



Every day of the week, students in Years 7, 8 and 9 and their teachers will stop what they are doing, pick up a book, and read for 15 minutes. The aim is to improve reading fluency and confidence by providing students with the opportunity to read regularly.

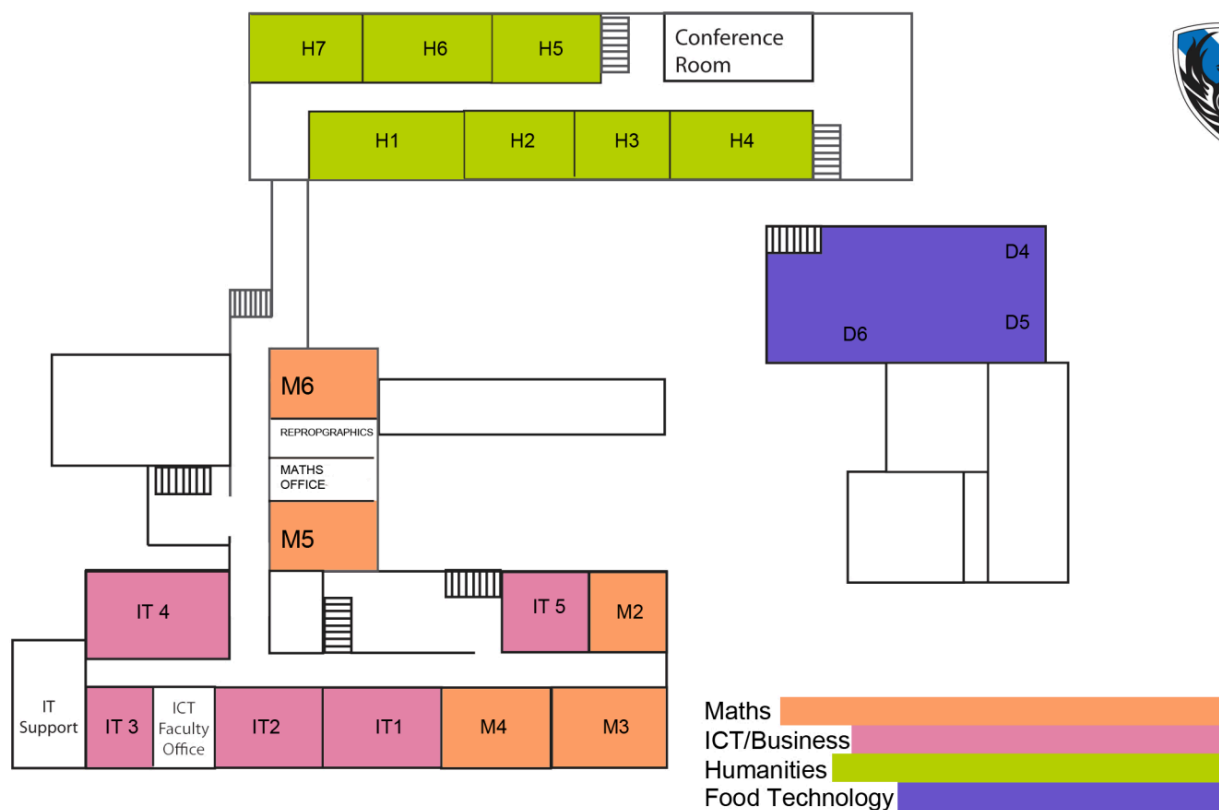
Students may read a book they have on loan from the library or a book from home.

In addition, we actively encourage students to read every day at home.

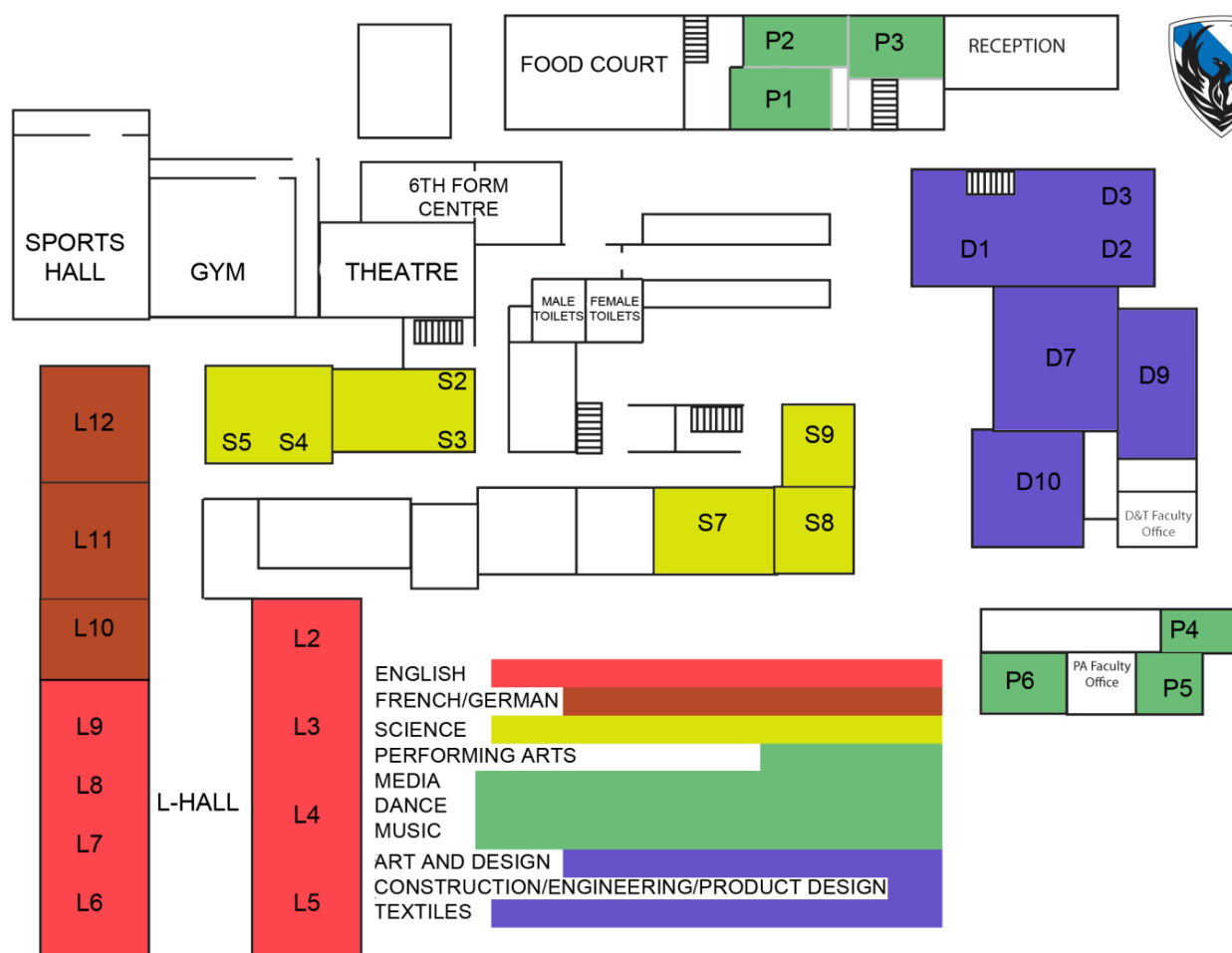
We challenge all students to become a **Hall Park Word Millionaire!** Our Accelerated Reader platform tracks every word read by students by quizzing them on books they have finished reading.



SITE MAP UPPER FLOORS



SITE MAP LOWER FLOORS



Appearance and uniform

The academy takes great pride in the appearance of its students and we welcome the co-operation of parents in this matter. We all need to work together to maintain our high standards. This is extremely important to the general discipline and ethos of the school. Students need to wear the uniform correctly to reflect a smart, dignified appearance.



UNIFORM

- Navy blazer (crested)
- Tie
- Pair of mid grey trousers (crested) or pleated Bedford Check skirt
- Academy jumper (optional)
- White shirt with top collar button
- Plain black leather or leather look shoes (no boots or trainers)
- Plain black / grey / navy socks to be worn with trousers
- Navy tights or navy socks to be worn with skirts
- Belt, plain black (optional)
- School coat, plain in colour (large logos, sports jackets, denim jackets, leather jackets, gilets and hoodies are all not permitted)

JEWELLERY

- One pair of small studs or sleeper earrings (no other visible piercings)
- No other jewellery other than a practical watch

HAIR AND MAKE-UP

- We expect hair styles to be neat and tidy. We do not accept extreme hairstyles or colours (please check with the academy if you need clarification or any advice on this matter.)
- Make-up, false eyelashes, false nails and nail varnish are not allowed.

HEADWEAR

- Baseball caps are not permitted to be worn in school or on the school premises
- Sensible headwear may be worn in inclement weather but must not be worn inside the buildings
- Headwear for religious reasons must be plain black

PE UNIFORM

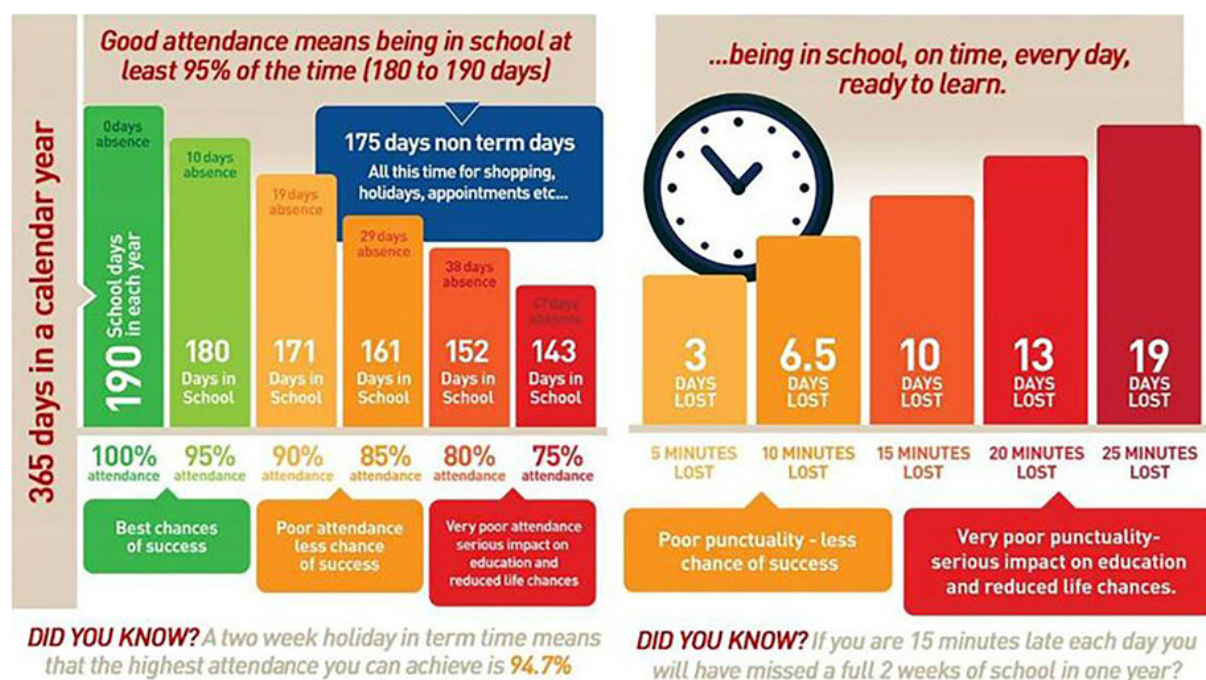
- Outdoor PE top, long sleeved (crested)
- Indoor PE top (crested)
- Pair of black PE shorts (crested) or black leggings (crested)
- Plain black football socks

Please find further information on PE uniform on the academy website.

To purchase school uniform, please visit our uniform supplier Just Schoolwear at www.just-schoolwear.co.uk. **Please note uniform may only be purchased online.** Store locations in Arnold, Long Eaton and West Bridgford are for **collections, returns** and **fittings only**.



Attendance



The Academy recognises the crucial link between achievement and attendance. There is clear evidence showing strong links between excellent GCSE results and excellent school attendance. Regular and punctual attendance at school is a legal requirement and it is also essential for students to maximise their chances of success. Our primary aim is that all students have 100% attendance.

REPORTING STUDENT ABSENCE

If your child is not able to come to school, you must contact us as soon as possible on the main school number on 01773 786 212.

A reason for absence should be given along with an indication of the anticipated length of absence. Where possible, medical evidence should be provided.

HOLIDAYS

The Academy does not authorise holidays. In exceptional circumstances, a request for holiday can be submitted to the Headteacher who will decide if there are any mitigating circumstances.

Anti-bullying

Hall Park Academy is committed to providing a safe, caring and friendly environment for learning for all our students to allow them to maximise their potential. We would expect students to act safely and feel safe in our Academy and feel confident to seek support from our Academy should they feel they or others are unsafe. Bullying of any kind is unacceptable at our Academy. We want parents to be confident that their children are safe and cared for in Academy and that incidents, when they do arise, are dealt with promptly and well.

Bullying is deliberate, hurtful behaviour, either physical or psychological, which is unprovoked and is repeated over a period of time.

REPORTING BULLYING

We have clear systems for reporting bullying for the whole Academy community. This is for those who are the victims of bullying or have witnessed bullying behaviour. To report bullying you can:

- Tell any member of staff
- E-mail anti-bullying@hallparkacademy.org.uk
- Use the anti-bullying box in the House Support office

All reported incidents will be taken seriously and investigated thoroughly. There are many other behaviours that can be unpleasant and need to be addressed but are not necessarily bullying, although they can potentially develop into bullying. Any such incidents should be reported to the Academy.



ANTI-BULLYING

We believe that the best way to tackle bullying is to promote and maintain an inclusive environment in which every member of the community is valued and respected. We are currently working with two organisations, the Anti-Bullying Alliance and the Princess Diana Trust, to implement our anti-bullying strategy. We have set up an anti-bullying ambassadors scheme involving students from all year groups who work with staff to target specific issues raised by students. Their role is promoting a bullying-free culture and a community of kindness.

PARENTAL SUPPORT

The support of those at home can help to prevent bullying or reduce its impact.

- Be observant of unusual behaviour, for example, if your child shows a sudden reluctance to attend school, feels ill regularly, fails to complete work to the usual standard or keeps asking for extra money.
- Listen and reassure your child – the bullying is not their fault. Try to establish the facts.
- Find out what your child wants to happen next. Help to identify the choices open to them; the potential next steps to take; and the skills they may have to help solve the problems.
- Inform the Academy immediately that you suspect bullying via your child's tutor, Head of House or the email address above.
- Advise your child not to fight back but to stand up for themselves by informing someone who will help. Remember that telling someone who can help is a form of standing up for yourself.
- Support your child. Reassure them action will be taken to make the bullying stop but also to develop a resilience to both minimise the impact upon them and to report the perpetrators immediately.
- Reassure your child that there is nothing wrong with them.
- Make sure you and your child are aware of the Academy's Antibullying Policy and guidance.
- Avoid posting about the situation on social media; this is likely to make the situation more difficult for all parties. If the bullying is occurring via social media, report it to the provider.
- If you are unhappy with the way in which the Academy is dealing with the situation, escalate your concerns to the Senior Leadership Team.

Sample menus

Hall Park Academy - Canteen Menu – Week 1

DAY	MAIN	DESSERT
MONDAY	BURGER IN A BUN	BUTTERSCOTCH TART
TUESDAY	PASTA	FRUIT CRUMBLE & CUSTARD
WEDNESDAY	ROAST DINNER	MARBLE SPONGE & CUSTARD
THURSDAY	MEAT PIE	TREACLE SPONGE & CUSTARD
FRIDAY	FISH & CHIPS	CHOCOLATE SPONGE & CUSTARD

MAIN MEAL DEAL £2.30 - MAIN MEAL ONLY £1.80 - VEGGIE OPTION AVAILABLE

Hall Park Academy - Canteen Menu – Week 2

DAY	MAIN	DESSERT
MONDAY	SAUSAGE DINNER	VICTORIA SPONGE
TUESDAY	SPAG BOL	MAGIC CHOCOLATE & CUSTARD
WEDNESDAY	ROAST DINNER	ICKY STICK SPONGE & CREAM
THURSDAY	CHICKEN CURRY	STRAWBERRY CHEESECAKE
FRIDAY	FISH & CHIPS	CHOCOLATE SPONGE & CUSTARD

MAIN MEAL DEAL £2.30 - MAIN MEAL ONLY £1.80 - VEGGIE OPTION AVAILABLE

Hall Park Academy - Canteen Menu – Week 3

DAY	MAIN	DESSERT
MONDAY	FAJITA'S	CARROT CAKE & CREAM
TUESDAY	SHEPHERDS PIE	CORNFLAKE TART & CUSTARD
WEDNESDAY	ROAST DINNER	RASPBERRY SPONGE & CUSTARD
THURSDAY	QUICHE	FRUIT CRUMBLE & CUSTARD
FRIDAY	FISH & CHIPS	CHOCOLATE SPONGE & CUSTARD

MAIN MEAL DEAL £2.30 - MAIN MEAL ONLY £1.80 - VEGGIE OPTION AVAILABLE

Hall Park Academy - Canteen Menu – Week 4

DAY	MAIN	DESSERT
MONDAY	SAVOURY MINCE CRUMBLE	SPONGE & CUSTARD
TUESDAY	CHICKEN CURRY	ORANGE SPONGE & CUSTARD
WEDNESDAY	ROAST DINNER	BUTTERSCOTCH TART
THURSDAY	ENCHILADA'S	CHOCOLATE CHEESECAKE
FRIDAY	FISH & CHIPS	CHOCOLATE SPONGE & CUSTARD

MAIN MEAL DEAL £2.30 - MAIN MEAL ONLY £1.80 - VEGGIE OPTION AVAILABLE

ParentPay

The Academy is a cashless school and uses ParentPay, an online platform allowing parents to pay securely for trips and activities. Parents can also add money to their child's account for purchasing food in school. This allows us to operate a cashless catering system where students can purchase food and drinks using just a finger print.



Further information on how to set up your ParentPay account will be sent out before September.

www.hallparkacademy.org.uk

Visiting the Hall Park Academy website is a great way to keep up to date with the latest information and news. We regularly update our website with information for students and parents regarding all aspects of school life.



Year 7 Walesby trip

The Year 7 Walesby trip continues to run as a great Hall Park tradition. Open to all Year 7 students, Walesby is a fantastic opportunity to get to know the other Year 7s in your House whilst enjoying a range of outdoor activities. Students spend the day at the purpose-built activity centre. More details will be shared at the start of the autumn term.



'Start your engines' booklet

This booklet will give parents and students a real taste of what they can expect to be doing in each subject in Year 7. There are suggested activities, reading, viewing and visits that will help support Year 7 learning.

Welcome to Hall Park Academy 2023



Welcome to Art

This is the curriculum for the Autumn term:

- Learn how to draw an accurate portrait
- Learn Colour theory and colour mixing
- Learn how to present work in a sketchbook
- Understand and apply the Visual Elements (Line, Tone, Texture, Shape, Colour, Form and Pattern)
- Explore watercolour techniques
- Study and respond to the work of Louis Jover






Programmes to watch:

- Art and Design KS3: Various careers within the visual arts
<https://www.bbc.co.uk/teach/class-clips-video/art-and-design/art/rf99xyc>
- What is art? <https://www.youtube.com/watch?v=vKjkx6Pz>

Activities:

- Practice drawing portraits.
<https://www.youtube.com/watch?v=CjzWYMYVQ0>
- Practice drawing facial features
<https://www.youtube.com/watch?v=wpZzbAeVxAE>
- 'Celebrity Supply Teacher' on BBC bitesize with Kaiser Chiefs
How to use colour effectively in your artwork
<https://www.bbc.co.uk/programmes/m000k4ng>

Free photo editing apps:

Colour pop
Photo lab
Photo editor
PS express

Snapseed
Pixlr.com (for PC)
Over

KS2 SAT Reading score of 105+



The Frozen Sea by Piers Torday

This story follows Jewel and her hilarious hamster, Fizz, who hide in an old bookshop to escape the bullies that are chasing her. Whilst inside, she stumbles across an unusual atlas which acts as a portal and transports her to Folio, a kind of enchanting Narnia. She meets a librarian who gives her an exciting but dangerous task; to rescue her Aunt Evie, the Empress of Folio. Jewel embarks on an adventure of a lifetime, where she learns some important truths along the way. The Frozen Sea is a story you will instantly fall in love with and will make your imagination run wild!



Artemis Fowl by Eoin Colfer



The Secret of Platform 13 by Eva Ibbotson



The 100 by Kass Morgan



The Lost Girl King by Catherine Doyle



Eric's best friend, Finn, was the world's most enthusiastic prankster. Was, because Finn died recently of an illness...or did he? At Finn's funeral, Eric receives a message from beyond the grave and it must be because this is Finn's biggest prank ever, faking his own death! As Eric follows Finn's cryptic instructions for various challenges, he goes down memory lane and through a scavenger hunt that will change Eric forever.



Animal Colours by David Baddiel



Escape Room by Christopher Edge



See you in the Cosmos by Jack Cheng



Finn Jones Was Here by Simon James Green



Counting by 7s by Holly Goldberg Sloan

Key events for Year 7

- Students return to school on Tuesday 5th September 2023
- Year 7 Welcome Evening
- Year 7 Review Week
- Year 7 progress report
- Year 7 Parents' Evening

Key dates will be communicated to you within our parent calendar issued in September 2023.

Notes

1234567891011121314151617181920212223242526272829303132333435363738394041424344454647484950515253545556575859606162636465666768697071727374757677787980818283848586878889909192939495969798991001011021031041051061071081091101111121131141151161171181191201211221231241251261271281291301311321331341351361371381391401411421431441451461471481491501511521531541551561571581591601611621631641651661671681691701711721731741751761771781791801811821831841851861871881891901911921931941951961971981992002012022032042052062072082092102112122132142152162172182192202212222232242252262272282292302312322332342352362372382392402412422432442452462472482492502512522532542552562572582592602612622632642652662672682692702712722732742752762772782792802812822832842852862872882892902912922932942952962972982993003013023033043053063073083093103113123133143153163173183193203213223233243253263273283293303313323333343353363373383393403413423433443453463473483493503513523533543553563573583593603613623633643653663673683693703713723733743753763773783793803813823833843853863873883893903913923933943953963973983994004014024034044054064074084094104114124134144154164174184194204214224234244254264274284294304314324334344354364374384394404414424434444454464474484494504514524534544554564574584594604614624634644654664674684694704714724734744754764774784794804814824834844854864874884894904914924934944954964974984995005015025035045055065075085095105115125135145155165175185195205215225235245255265275285295305315325335345355365375385395405415425435445455465475485495505515525535545555565575585595605615625635645655665675685695705715725735745755765775785795805815825835845855865875885895905915925935945955965975985996006016026036046056066076086096106116126136146156166176186196206216226236246256266276286296306316326336346356366376386396406416426436446456466476486496506516526536546556566576586596606616626636646656666676686696706716726736746756766776786796806816826836846856866876886896906916926936946956966976986997007017027037047057067077087097107117127137147157167177187197207217227237247257267277287297307317327337347357367377387397407417427437447457467477487497507517527537547557567577587597607617627637647657667677687697707717727737747757767777787797807817827837847857867877887897907917927937947957967977987998008018028038048058068078088098108118128138148158168178188198208218228238248258268278288298308318328338348358368378388398408418428438448458468478488498508518528538548558568578588598608618628638648658668678688698708718728738748758768778788798808818828838848858868878888898908918928938948958968978988999009019029039049059069079089099109119129139149159169179189199209219229239249259269279289299309319329339349359369379389399409419429439449459469479489499509519529539549559569579589599609619629639649659669679689699709719729739749759769779789799809819829839849859869879889899909919929939949959969979989991000

1. The first part of the document discusses the importance of maintaining accurate records of all transactions and activities. It emphasizes the need for transparency and accountability in financial reporting.

2. The second part of the document outlines the various methods and techniques used to collect and analyze data. It includes a detailed description of the experimental procedures and the statistical analysis performed.

3. The third part of the document presents the results of the study. It includes a series of tables and graphs that illustrate the findings of the research. The data shows a clear trend in the relationship between the variables studied.

4. The fourth part of the document discusses the implications of the findings. It highlights the potential applications of the research in various fields and the need for further investigation.

5. The fifth part of the document concludes the study. It summarizes the key findings and provides a final statement on the importance of the research.



Hall Park Academy
Mansfield Road
Eastwood
Nottinghamshire
NG16 3EA

Tel: 01773 786 212

E-mail: office@hallparkacademy.org.uk